

Addressing Extreme Heat Impacts in Southern Nevada

Metropolitan Planning Subcommittee | November 8, 2022



Extreme Heat in Southern Nevada

#2

Hottest climate
in U.S.

#2

Fastest warming
climate in U.S.

72

100-degree days

1970

97

100-degree days

2020

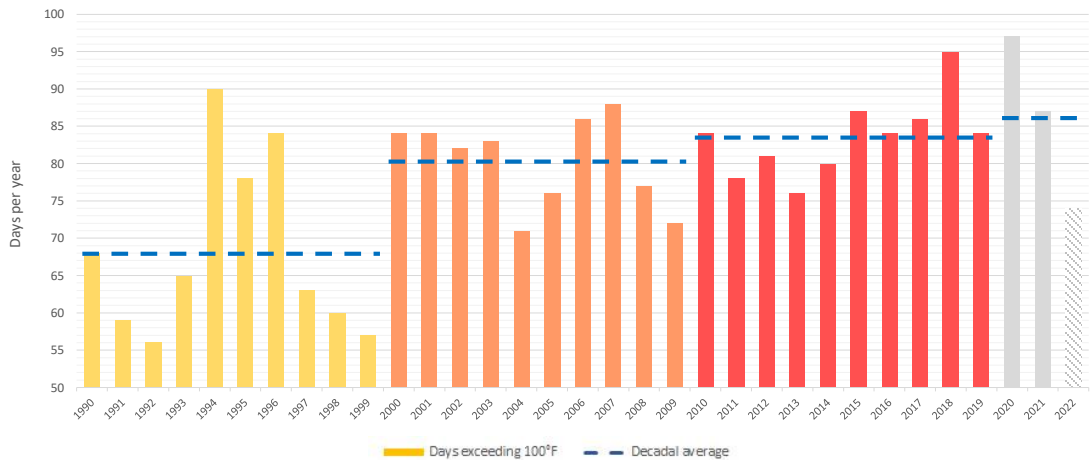
115

100-degree days

2070

Extreme Heat in Southern Nevada

Days exceeding 100°F in Southern Nevada



Negative Impacts



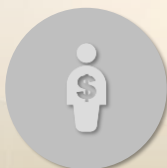
water supply



infrastructure



air quality



tourism



health

Negative Impacts



water supply

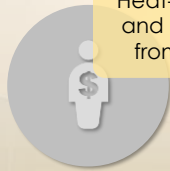
619

infrastructure

331

air quality

Heat-related **ER visits**
and **hospitalizations**
from 2016 to 2018



tourism

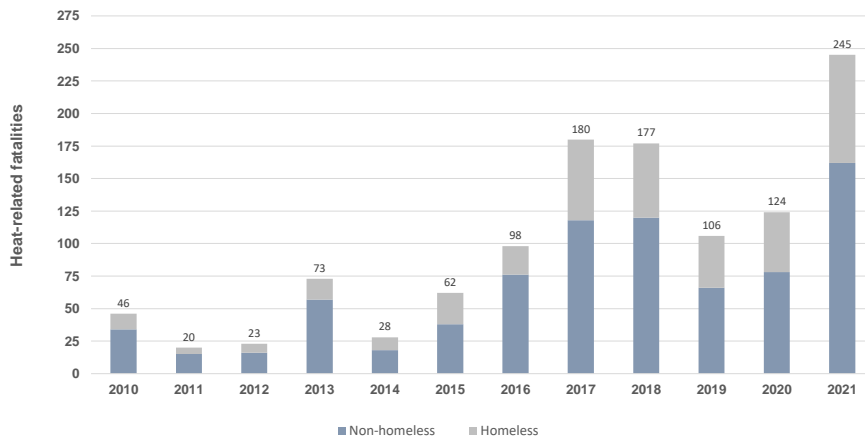


health

Heat-related **deaths**
from 2016 to 2018

Negative Impacts

Heat-related fatalities in Southern Nevada

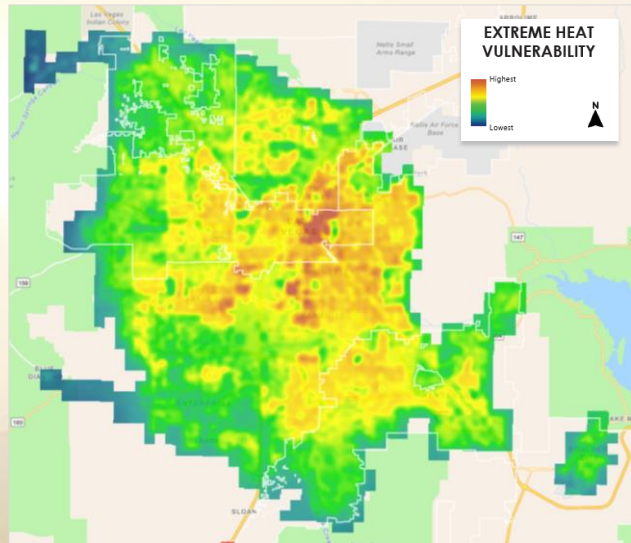


Data source: Clark County Coroner's Office; Published in *Las Vegas-Review Journal* (2022)

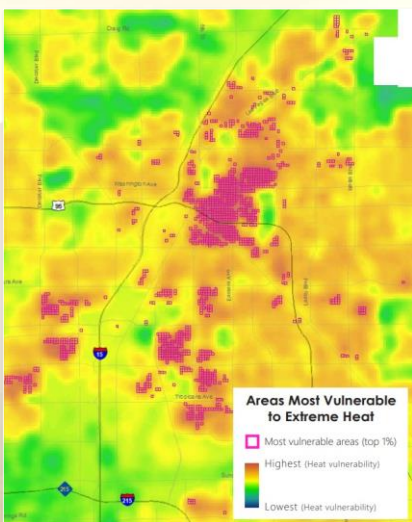
Extreme Heat Vulnerability Analysis

Phase 1 research:

- Identify areas with populations most vulnerable to heat
- Catalogue strategies for reducing heat vulnerability in Southern Nevada
- www.rtcshv.com/extremeheat



Extreme Heat Vulnerability Analysis



Areas Most Vulnerable to Extreme Heat

- Concentrated in urban core and east side
- Older neighborhoods/housing
- Communities of color (esp. Hispanic/Latinx and Black/African American)
- Household income: \$31,000
- Lower elevation (naturally hotter than western half of region)

Current & Future Action



Community
survey



UHI mapping



Resource
website



Cool
pavement



Tree canopy
expansion



Transit
shelters

Current & Future Action



Heat & Transit survey

- July 5 – Sept. 7
- 1,600+ responses
- Preliminary findings:
 - 49% of respondents experienced heat-related illness while taking transit
 - Reduced wait times, more shade, water refill stations



UHI mapping campaign

- Saturday, Aug. 13
- Volunteer pool 300+
- Atypical weather:
 - Low 90s
 - Humid
 - Cloudy
- Results expected in November



Cool pavement pilot

- Exploring regional pilot project
- Learning from ASU, City of Phoenix
- Researching cool pavement products
- Coordinating with S&H, Public Works



NOAA tabletop exercise

- Early December 2022
- Identify interventions aimed at:
 - Heat mitigation
 - Reducing vulnerabilities
- Climate justice/equity
- More info to come

Addressing Extreme Heat Impacts in Southern Nevada

Metropolitan Planning Subcommittee | November 8, 2022

